



It's a System
Not a Machine

SUBSTRATE TECHNOLOGY, INC. PROFESSIONAL FLOOR SYSTEMS

It's a System



Not a Machine



Polished Concrete



Polished Terrazzo



Polished Marble

Save time, labor, AND get great results?! With STI, absolutely!!

P/M® It's a System
Not a Machine

JOB DONE FAST WITH PRODUCTS THAT LAST.

When you grind and polish the floor right the first time, you suddenly have a lot more time on your hands.

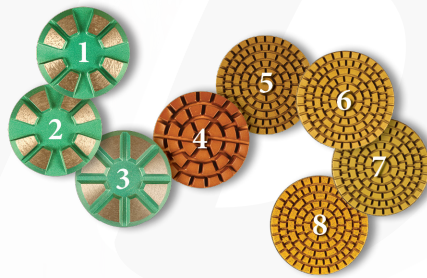
STI products are designed to get the job done fast and have long usage life. The less it costs per SF/M² in labor savings and tool cost savings – the more time and money for you.

How do we do this?

- We only use high quality materials in all our products
- STI machines are hand-built with the “STI Guarantee” to last
- STI diamonds are manufactured in a factory that has two ISO Certifications and one TUV audit - unheard of in the industry!

THE EASIEST SYSTEM TO LEARN.

- No confusion to know what diamond grit comes next
- STI diamonds are color-coded for quick system identification: One system = One color
- They are numbered in sequential order: #1 through #8
- Just follow the sequence and you will get the same results every time... it's that easy!



CREATES A TRUE MECHANICAL POLISH.

- The better a floor is refined during the polishing process, the longer it will last
- There is absolutely NO need for a guard to add that “pop” to the final floor
- Unlike coatings that wear off, the STI shine lasts for years to come



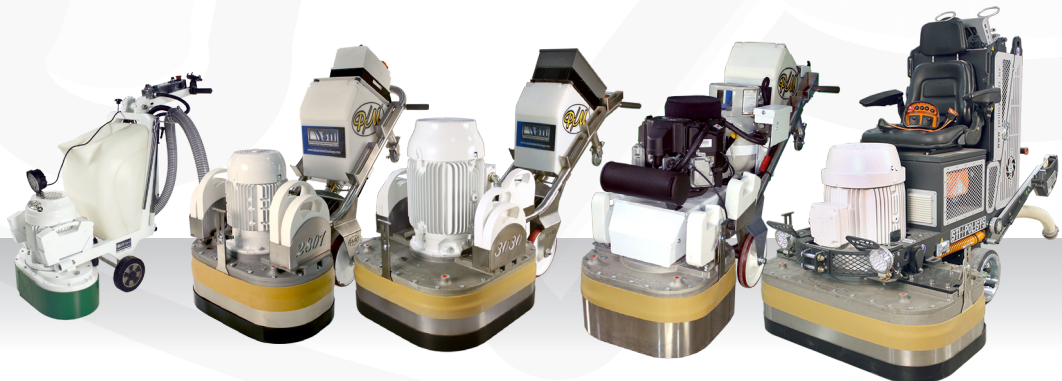
Gloss meter reading of polished concrete after using the EGT Diamond System

Prep/Master® Products

Grinding Machines & Diamond Systems—Designed to Work Together!

P/M Grinders

- Electric
- Propane
- Remote Control



STI Diamond Systems for Various Applications



#0 Prep



#00 Prep

Surface Preparation



EGT



CLC

Polished Concrete



TPS

Terrazzo Polishing



60-year-old concrete floor
polished to perfection by the
EGT Diamond System



Before

STI Reputation

Superior Products
Make All the Difference
in the World!

Substrate Technology, Inc. is known around the world as the manufacturer of superior products that are unparalleled in the flooring industry.

STI machines and diamonds work synergistically as a complete system that produce unprecedented results. We guarantee it!



Polished Terrazzo



Polished Marble



7.5
HP

455
LBS.

6
TOOLS



Production Rates (per hr)	300 SF (28m ²) Polished Concrete
	200 SF (19m ²) Thin Set Removal
	200 SF (19m ²) Mastic Removal
	50 SF (5m ²) +/-25 Mil Coatings

MODEL	ITEM NUMBER
Prep/Master® Jr.	823752201

FOR POLISHING PROJECTS UP TO 1,000 SF (100 M²) PREP/MASTER® JR.

The **Prep/Master® Jr.** grinder by STI works extremely well in small, hard-to-reach areas that requires a more compact design — perfect for residential garage floors.


This grinder is very aggressive, yet extremely easy to operate due to the smooth operation of the STI rotary gear system. In addition, the low price of the Prep/Master Jr. is very affordable and fits any project budget.

PREP/MASTER JR. FEATURES

- **7.5 HP / 220/240V Single phase / 40 Amps**
- **Dimensions:** 50" L x 23" W x 48" H
- **Working width:** 23 inches (58 cm)
- **Heavy head pressure** for better performance
- **Easy disassembly of machine** into two sections for quick transportation (*grinding head weight=260 lbs. & handle weight=130 lbs.*)
- **Screw-in carrying poles** for two- or three-person lifting
- **Magnetic LED light** that attaches anywhere to illuminate front or behind machine on the cutting path
- **On-board USB Charger & Phone Carrier**

Disassemble into 2 pieces for
easy transportation



It's a System

 Not a Machine



Production
Rates (per hr)

1,200 SF (112m²) Polished Concrete
 600 SF (56m²) Thin Set Removal
 600 SF (56m²) Mastic Removal
 425 SF (39m²) +/-25 Mil Coatings

MODEL	ITEM NUMBER
3030 220V/230V	433030230
3030 380V/480V	433030480
3025 220V/230V	433025230
3025 380V/480V	433025480
3038LP	433038001

FOR POLISHING PROJECTS UP TO 10,000 SF (1,000 M²) STI-3030 / STI-3038LP

Our most popular sized model—the 3030 (electric) and 3038LP (propane) work very well for mid-sized to larger projects.

Quite unexpectedly for its weight and size, this grinder is extremely easy to operate due to the smooth gliding operation of the STI rotary gear-to-gear system. And its variable speed drive easily adapts to different grinding and polishing conditions.

Prep/Master® is well known for its durability, reliability, and longevity, backed by the STI satisfaction guarantee!

MODEL FEATURES

- **Number of tool plates:** 4
- **Number of tools needed:** 12
- **Tool attachment style:** EG Proprietary
- **Recommended vacuum:** Duo Vac (630 CFM) with pre-separator or equivalent
- **Vacuum hose connection:** 3 in. (76mm)
- **Electric model available in:** 30HP or 25HP

Electric Motor	30 HP-3 phase (22kW)
Power Source	220/230 VAC 1 or 3 Phase 60 Hz 380/480 VAC 3 Phase 50-60 Hz
Power Cord	30 ft. (9m) 6-4
Weight	1,338 lbs. (607 kg)
Tool RPM	300 - 750 RPM variable
Dimensions	86"L x 30"W x 52"H (218 cm x 76 cm x 132 cm)

Propane Motor	Kawasaki 38HP LP
Motor RPM	2,200 - 3,650 RPM
Tool RPM	366 - 500 RPM
Weight	1,084 lbs. (492 kg)
Dimensions	86"L x 30"W x 48"H (218 cm x 76 cm x 122 cm)

AIRTEC AG

SCARIFIERS, PROFILERS, SHAVERS



HEADQUARTERS

Zunzgen, Switzerland
Founded 1974



Airtec has developed a product line of specialized machines for dust-free, environmentally-friendly, economical surface preparation. All machines work on the principle with a rotating milling drum equipped with tungsten carbide or steel milling cutters to treat virtually all floors and coatings.

The main fields of application include: cleaning of concrete and asphalt, as well as roughening of concrete and asphalt surfaces as a pretreatment for coatings. Profile definition for smooth concrete floors (e.g. in cattle sheds), material removal for stone and concrete with carbide tools, removal of adhesives, foam, felt, etc.



SCARIFIERS & PROFILERS

Scarifiers utilize rasping wheels, loosely placed on a rotating work drum for thorough, yet gentle, rasping and milling of adhesive, rubber, concrete slurry, uneven spots, and old coatings. Profilers are used to remove concrete aggressively; however, they leave the surface area more smooth compared to scarifiers. Profilers use diamond blade drums that rotate at high speeds to grind and smooth the concrete surface.

Scarifiers & Profilers to rectify any flooring condition.



*Europrint
ES-200*



*Roto-Tiger
RT-2500*



*Roto-Tiger
RT-3200
(gasoline)*



*Shave Master
SM-320*



*Roto-Mat
RM-320*



MAKINEX CONSTRUCTION PRODUCTS PORTABLE GENERATORS



HEADQUARTERS

Redondo Beach, California, U.S.A.



MAKINEX Construction Products is an Australian-owned, global company that provides innovative solutions to the construction, rental, landscaping, flooring, and related industries.

They design, manufacture, and distribute unique products that vastly increase productivity, saving time, and physical effort. Their products provide contractors and tradespeople with a better way to do their jobs—faster, safer, and easier.



PORTABLE GENERATORS— 3-PHASE & SINGLE-PHASE

The Makinex Generator product line is a powerful and reliable solution for providing power to equipment and tools, floor grinding, welders, and brick saws, air compressors, and a wide range of applications.

Combining 3-phase and single-phase outlets, Makinex generators are light and compact enough to move into any location that requires electrical power—instantly! Using a Honda engine and paralleling capacity, Makinex provides 15% more power from the same engine.

Compact, lightweight, clean power...3-phase & single-phase.

6kw



10kw



16kw





Service • Support • Success

AUTHORIZED DEALER OF:



CONTACT US

SUBSTRATE TECHNOLOGY, INC.

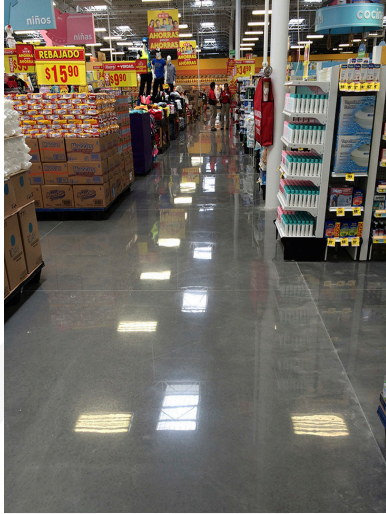
1384 Bungalow Rd.

Morris, IL 60450 U.S.A.

Ph. +1.815.941.4800

Fax +1.815.941.4600

www.substratetechnology.com



At STI, we are proud to offer products that deliver “real world” solutions for our customers. Due to our combined experience of over 100 years of contracting, ISO-certified suppliers, patent-pending products, dedicated staff, superior customer service, and no fear of hard work – we are confident to say – you are using the best products in the industry!

Through subsequent successes & failures over the past couple decades, our leaders, manufacturers, and sales personnel have developed a strong, proven system of machinery and diamond tooling that can truly be relied upon to deliver the fastest, most predictable results – guaranteed!

We at STI truly know what matters to you in the flooring business – because it mattered to us first! STI products are cutting-edge systems ready to deliver you solutions that are profitable, as well as predictable.

And, definitely, let us know how our products work for you – we love to have feedback from our customers!

LEED APPROVED

Concrete polishing is a green product and contributes to environmental sustainability through economic and energy savings, reducing the need to bring in additional coverings or coatings that end up in landfills.

